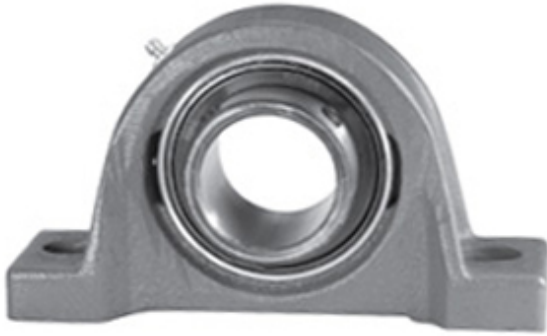




## Cixi Kent Bearing Co., Ltd.

1.438 Inch | 36.525 Millimeter x 1.766 Inch |  
44.85 Millimeter x 1.875 Inch | 47.63 Millimeter  
LINK BELT P3U223JHK54 Pillow Block Bearings



P3U223JHK54 Bearing 2D drawings and 3D CAD models

Bearing No. P3U223JHK54

|                           |  |
|---------------------------|--|
| Category                  | Pillow Block Bearings  |
| Inventory                 | 0.0  |
| Manufacturer Name         | REXNORD  |
| Minimum Buy Quantity      | N/A  |
| Weight                    | 1.57   |
| EAN                       | 0662327943745  |
| Product Group             | M06110   |
| Number of Mounting Holes  | 2  |
| Mounting Method           | Set Screw  |
| Housing Style             | 2 Bolt Pillow Block  |
| Rolling Element           | Ball Bearing   |
| Housing Material          | Cast Iron  |
| Expansion / Non-expansion | Non-expansion  |
| Mounting Bolts            | 1/2 Inch   |
| Relubricatable            | Yes  |
| Insert Part Number        | UG223HL  |
| Seals                     | Floating Labyrinth   |
| Housing Configuration     | 1 Piece Solid  |
| Inch - Metric             | Inch   |
| Other Features            | Single Row   Standard Duty<br>  Standard Backing   Wide<br>Inner Race  |
| Long Description          | 2 Bolt Pillow Block; 1-7/16"<br>Bore; 1-7/8" Base to Center<br>Height; Set Screw Mount;<br>Ball Bearing; Relubricatable; |



## Cixi Kent Bearing Co., Ltd.

|                               |   |
|-------------------------------|---|
|                               | Cast Iron; Floating Labyrinth; Non-expansion                |
| Category                      | Pillow Block  |
| UNSPSC                        | 31171511  |
| Harmonized Tariff Code        | 8483.20.40.40   |
| Noun                          | Bearing   |
| Keyword String                | Pillow Block  |
| Manufacturer URL              | <a href="http://www.rexnord.com">http://www.rexnord.com</a> |
| Manufacturer Item Number      | P3U223JHK54   |
| Manufacturer Internal Number  | 5894374   |
| Weight / LBS                  | 3.7   |
| Actual Bolt Center to Center  | 4.9 Inch   125.4Millimeter                                  |
| d                             | 1.438 Inch   36.525 Millimeter                              |
| Bolt Spacing Minimum          | 0 Inch   0Millimeter  |
| Nominal Bolt Center to Center | 5 Inch   127 Millimeter                                     |
| Bolt Spacing Maximum          | 0 Inch   0Millimeter  |
| B                             | 1.875 Inch   47.63 Millimeter                               |
| D                             | 1.766 Inch   44.85 Millimeter                               |