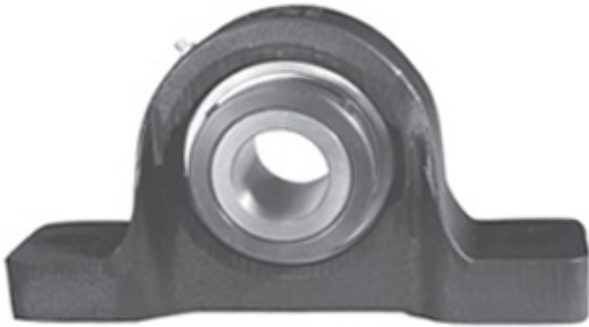




## Cixi Kent Bearing Co., Ltd.

2.438 Inch | 61.925 Millimeter x 3.313 Inch |  
84.14 Millimeter x 3.625 Inch | 92.075 Millimeter  
LINK BELT PU339J18W4 Pillow Block Bearings



Bearing No. PU339J18W4

PU339J18W4 Bearing 2D drawings and 3D CAD models

Category	Pillow Block Bearings
Inventory	0.0
Manufacturer Name	REXNORD
Minimum Buy Quantity	N/A
Weight	12.49
EAN	0793699359282
Product Group	M06110
Number of Mounting Holes	2
Mounting Method	Concentric Collar
Housing Style	2 Bolt Pillow Block
Rolling Element	Ball Bearing
Housing Material	Cast Iron
Expansion / Non-expansion	Non-expansion
Mounting Bolts	3/4 Inch
Relubricatable	Yes
Insert Part Number	UG339L
Seals	Steel Clad Clearance
Housing Configuration	1 Piece Solid
Inch - Metric	Inch
Other Features	Single Row   Heavy Duty   Single Collar   Standard Backing   With Set Screw
Long Description	2 Bolt Pillow Block; 2-7/16" Bore; 3-5/8" Base to Center Height; Concentric Collar Mount; Ball Bearing;



## Cixi Kent Bearing Co., Ltd.

	Relubricatable; Cast Iron; Steel Clad Clearance; Non- expansion
Category	Pillow Block
UNSPSC	31171511
Harmonized Tariff Code	8483.20.40.40
Noun	Bearing
Keyword String	Pillow Block
Manufacturer URL	<a href="http://www.rexnord.com">http://www.rexnord.com</a>
Manufacturer Item Number	PU339J18W4
Manufacturer Internal Number	0135928
Weight / LBS	27.5
D	3.313 Inch   84.14 Millimeter
Bolt Spacing Maximum	0 Inch   0Millimeter
Nominal Bolt Center to Center	11.3 Inch   287 Millimeter
d	2.438 Inch   61.925 Millimeter
B	3.625 Inch   92.075 Millimeter
Bolt Spacing Minimum	0 Inch   0Millimeter
Actual Bolt Center to Center	11.3 Inch   287Millimeter